



Quick Start Guide

Hardware Connections

1

Connect the fiber optic cable to the PON port.

Warning! To avoid possible eye injury, do NOT look into an operating fiber-optic module's connector.

2

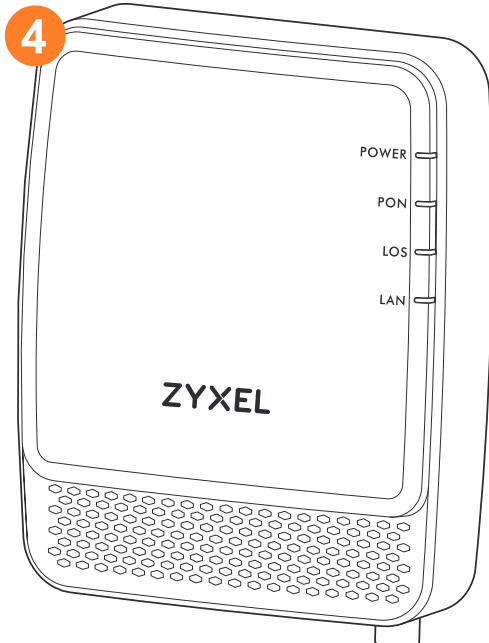
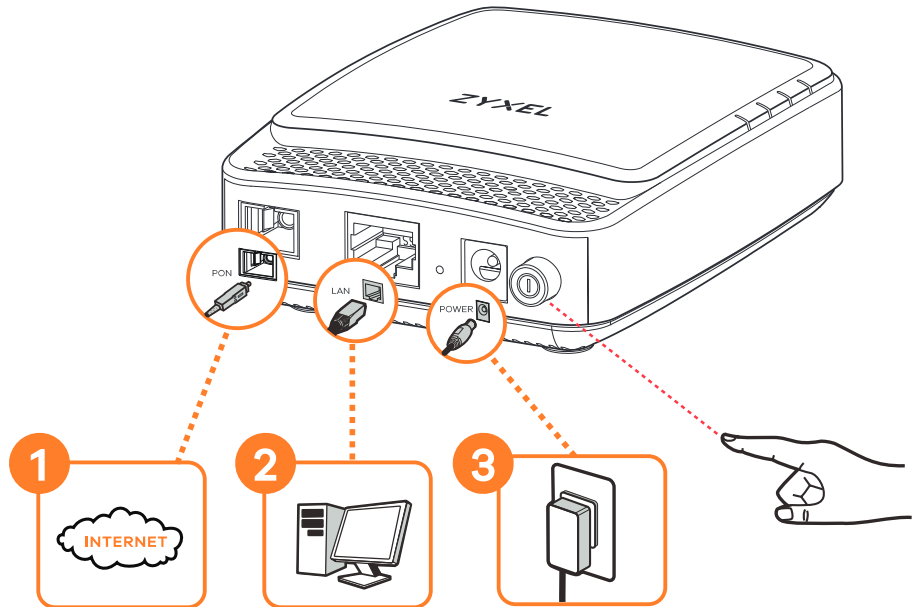
Connect a computer using an Ethernet cable.

3

Connect the power cable and press the power button.

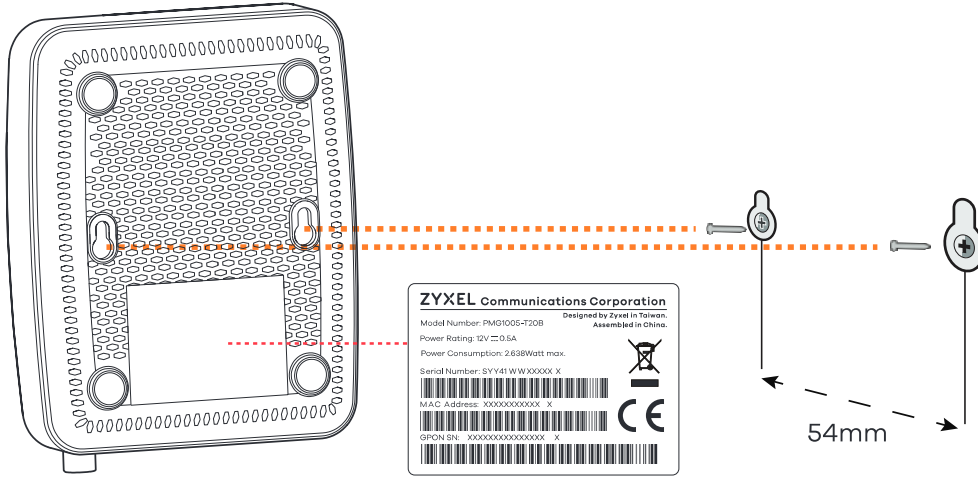
4

Make sure the LEDs are on and check the status.



POWER	Green	On: Power on and system ready
	Off	Off: Power off
PON	Green	On: Successful GPON fiber link Blinking: Synching with OLT (fiber terminal)
	Off	Off: Power off
LOS (Loss of Signal)	Red	On: Not receiving an optical signal Blinking: Receiving a weak optical signal
	Off	Off: Receiving a normal optical signal
LAN	Green	On: Successful Ethernet link Blinking: Transmitting/Receiving data on the Ethernet link
	Off	Off: Ethernet link down

Wall Mounting



Troubleshooting

- None of the LEDs turn on
- Make sure that you have the correct power cord connected and plugged into an appropriate power source.
- The PON LED is blinking
- The fiber link is synchronizing. Please wait.
- The PON LED is off
- The fiber link is down. Restart the Device.
- The LOS LED is blinking
- The Device is receiving a weak optical signal. Reposition the Device.
- The LOS LED is red
- The Device is not receiving an optical signal. Reconnect the fiber optic cable to the PON port.
- The LAN LED is off
- The Ethernet connection is down. Reconnect the Ethernet cable to the LAN port.
- If problems persist, please contact your vendor or customer support.

See the User's Guide at www.zyxel.com for more information, including customer support and safety warnings.

EU Importer: Zyxel Communications A/S | Generatorvej 8D, 2860 Søborg, Denmark | <http://www.zyxel.dk>
US Importer: Zyxel Communications, Inc | 1130 North Miller Street Anaheim, CA 92806-2001 | <http://www.us.zyxel.com>